

# how it works:

## Simple to Use...Affordable to Own

- The patented KEYper® System starts with a Key Board, available in many different sizes & configurations to fit your needs.
- With a stainless steel frame & poly carbonate (Lexan®) components, the KEYper System is maintenance free, rainproof and practically indestructible.
- Customization options include: vertical or horizontal mounting, custom labeling, color coding etc.
- Systems can be installed into steel enclosures or installed on optional carts to make the system mobile.



next  
page

## The Tamper Seal -

- The Tamper seal comes to you as shown.
- Put the open end of Tamper Seal through the key / asset, then through the KEYper Plug that is secured to the system.



## The Tamper Seal & KEYper Plug

- The Tamper Seal locks the key / asset to the KEYper Plug.
- While secured to the KEYper System, the Tamper Seal eliminates any possibility of unauthorized removal of key / asset.
- The KEYper Plug is available in 12 colors, the seal in 4 colors.
- A supply of Tamper Seals comes with each system, each seal has a write on surface.



next  
page

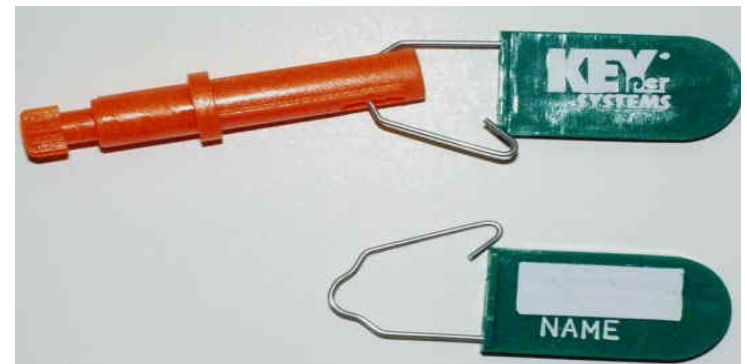
## The **KEYper Access Peg.**

- Each KEYper Access Peg is engraved on the end (as shown below), to personalize the Access Peg for each authorized user.
- Color coding can be used to identify user groups or departments.
- Available in 12 colors.



## The **Name ID Seal**

- The Name ID Seal has an indelible writing surface & is used to quickly identify the user.



next  
page

## Quick Release Key Connector (optional accessory)

- The Quick Release Key Connector makes it easy to keep the Access Peg with you at all times.



## Mirror Hanger (optional accessory)

- The Mirror Hanger is used primarily by Car & Truck dealers.
- The Mirror Hanger number identifies the port location where the keys are secured.
- The Mirror Hanger can be customized for your location



next  
page

## How the patented KEYper® System works...

- The KEYper Access Peg is used to release keys / assets from the system.
- The patented KEYper System requires the user to insert their personalized Access Peg into the port beside the needed key / asset.
- By turning the Access Peg 1/4 to the left, the needed key / asset is unlocked & the users Access Peg is now "locked" in.



next  
page

## At A Glance...

You will ALWAYS know who removed keys from the system !!!

- The KEYper Access Peg cannot be removed until the key / asset is returned.



## To retrieve your KEYper Access Peg...

- Simply return the key / asset back to the same location...turn the KEYper Access Peg 1/4 to the right.
- The key / asset is now locked back to the KEYper System & the Access Peg is free to remove any other key / asset on the system.



next  
page

## **Organization...Accountability...Productivity**

The KEYper System forces the user to return the key / asset back to the same location each time resulting in complete accountability for your keys / assets.

***"Simple to Use...Affordable to Own"***